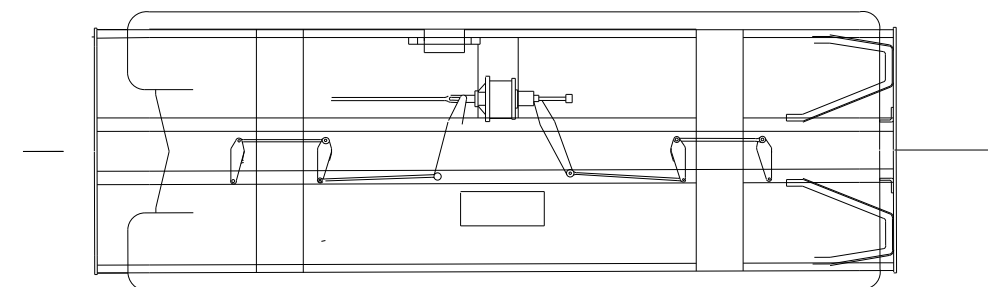
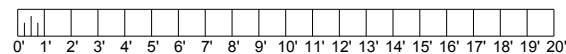


**SOUTH AUSTRALIAN RAILWAYS 500 CLASS 4-8-2 STEAM LOCOMOTIVE AS INTRODUCED IN 1926**  
**BUILDER** SIR W.G. ARMSTRONG, WHITWORTH – NEWCASTLE ON TYNE, ENGLAND  
**NUMBER IN CLASS** 10, NUMBERED FROM 500 TO 509  
**TRACTIVE EFFORT** 51,000 LB  
**COAL CAPACITY** 12 TONS (17 TON CAPACITY IN REBUILT TENDER, REDUCED TO 11 TONS FOR 20 TON AXLE LOAD)  
**WATER CAPACITY** 8300 GALLONS  
**WEIGHT IN WORKING ORDER** 218 TONS 13 CWT  
**DRAWN** HUGH WILLIAMS, FOR MODELLING THE RAILWAYS OF SA CONVENTION 2007

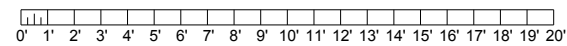
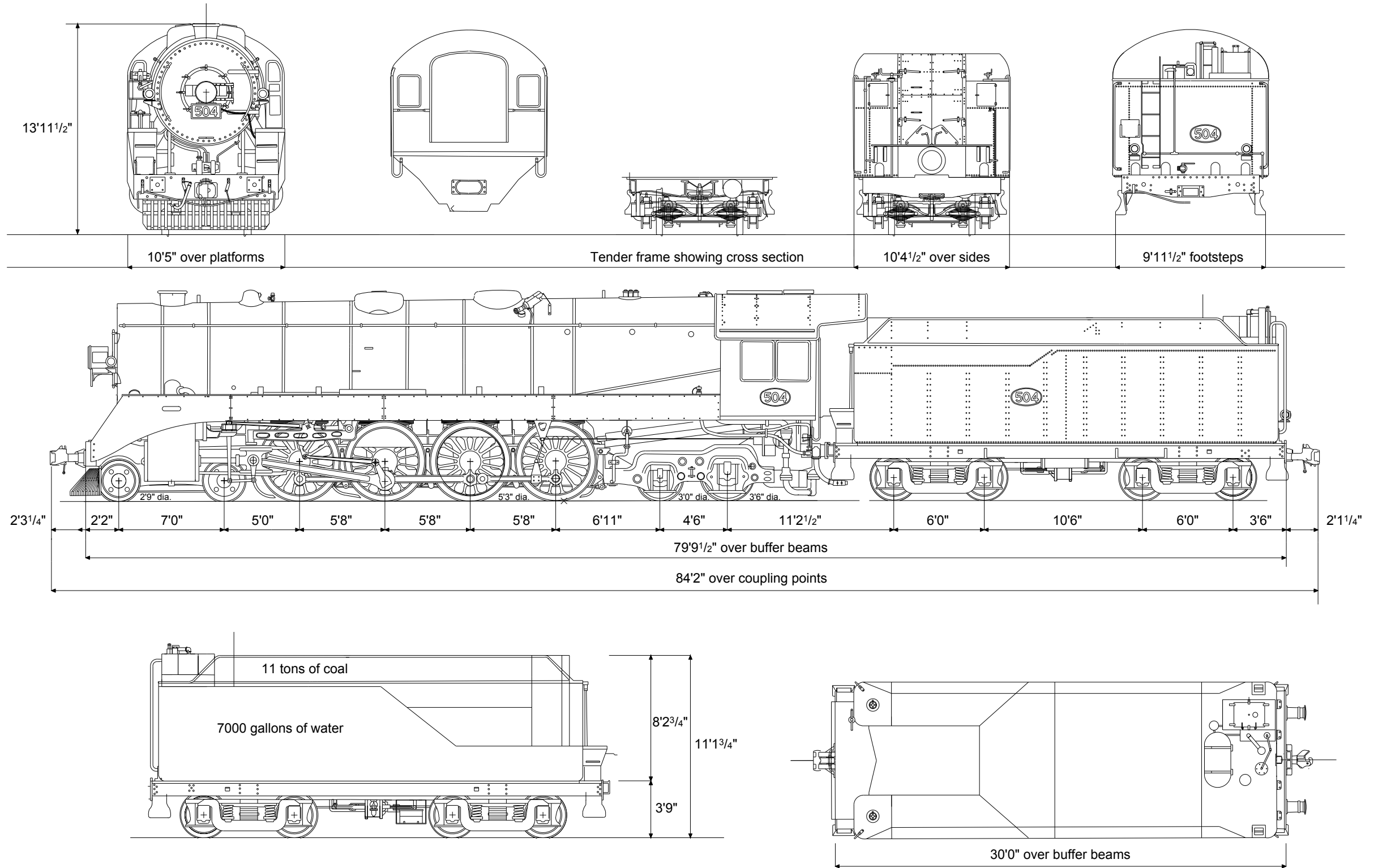


Tender frame detail looking down from top



**SOUTH AUSTRALIAN RAILWAYS 500 CLASS STEAM LOCOMOTIVE**

Drawn: Hugh Williams 2007



SOUTH AUSTRALIAN RAILWAYS 500B CLASS STEAM LOCOMOTIVE

Drawn: Hugh Williams 2007